

WITH 4' HALF PORCH

PARADISE PARK

~~LOT #29 D'AMOURS AVE~~

LOT #32 MAVIS AVE

SHEET INDEX

- COVER SHEET
- LITERATURE PLAN
- FRONT ELEVATION
- SIDE AND REAR ELEVATIONS
- FLOOR PLAN
- HOT AND COLD SUPPLY LAYOUT
- DWV LAYOUT
- GAS LAYOUT
- CROSS SECTION DETAIL
- PIER PLAN

"CHESAPEAKE"

3 BEDROOM, 2 BATH

933 SQ. FT.

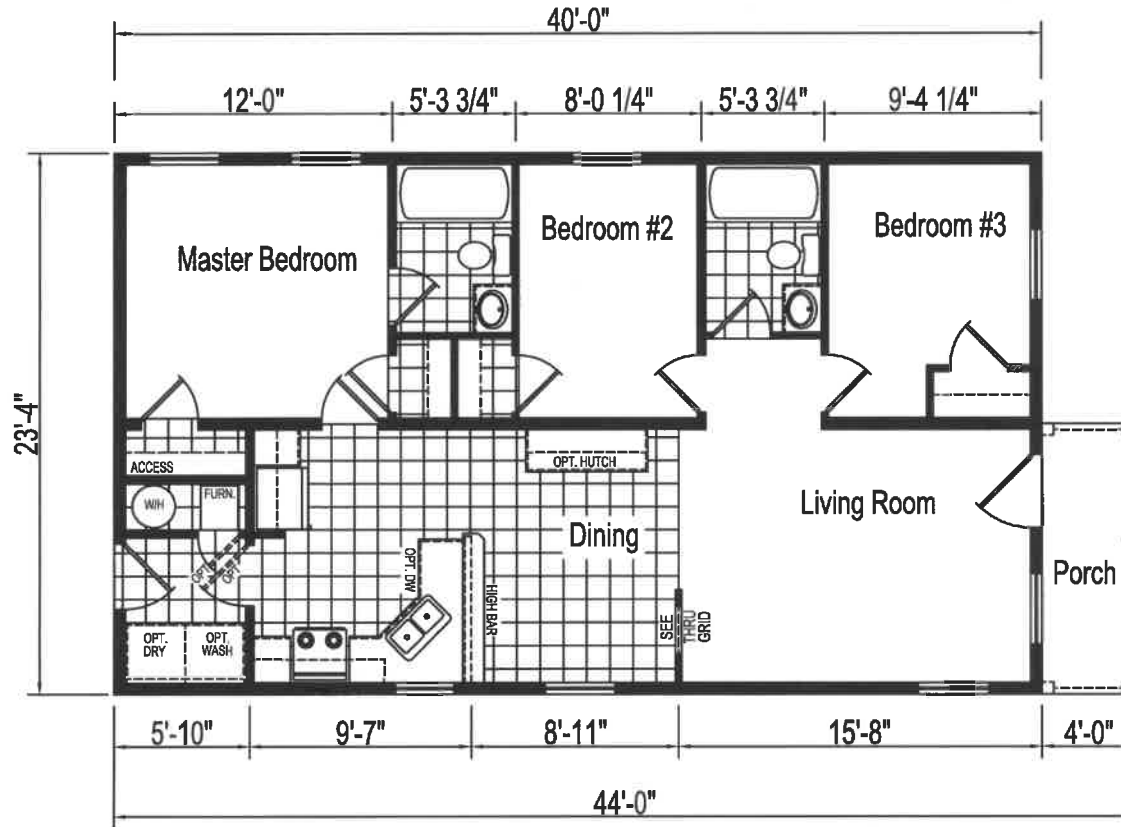
A HOME DESIGNED FOR:

Eagle River Retailers


EAGLE RIVER HOMES

Revisions		Rev. Date:	Rev. By:	Drawn By:	Title:	Date Drawn:	Model:	Sheet:
A	.	.	.	JY	COVER PAGE			
B	.	.	.					
C	.	.	.					
THE INFORMATION ON THIS PAGE IS PROPRIETARY AND CONFIDENTIAL				9-14-09	ERH-44G1001-C			COV

WITH 4' HALF PORCH



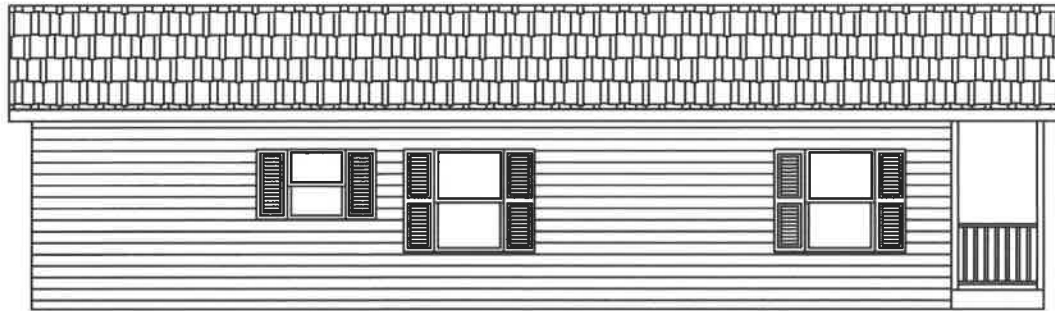
ERH-44G1001-C
 3 BEDROOM, 2 BATH
 NOMINAL SIZE: 24'x44'
 TOTAL AREA: 933 SQ. FT.
 (NOT INCLUDING PORCH)

CHESAPEAKE DOUBLE



Revisions		Rev. Date:	Rev. By:	Drawn By:	Title:
A				JY	LITERATURE PLAN
B					
C					
THE INFORMATION ON THIS PAGE IS PROPRIETARY AND CONFIDENTIAL				Date Drawn:	Model:
				9-14-09	ERH-44G1001-C
					Sheet: LIT

WITH 4' HALF PORCH



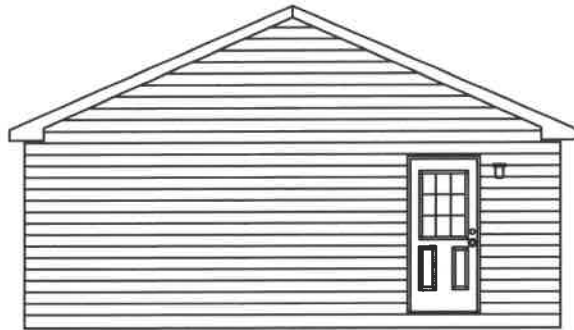
FRONT ELEVATION

EAGLE RIVER HOMES

	Revisions	Rev. Date:	Rev. By:
A	.	.	.
B	.	.	.
C	.	.	.
THE INFORMATION ON THIS PAGE IS PROPRIETARY AND CONFIDENTIAL			

Drawn By: JY	Title: FRONT ELEVATION
Date Drawn: 9-14-09	Model: ERH-44G1001-C
Sheet: EL1	

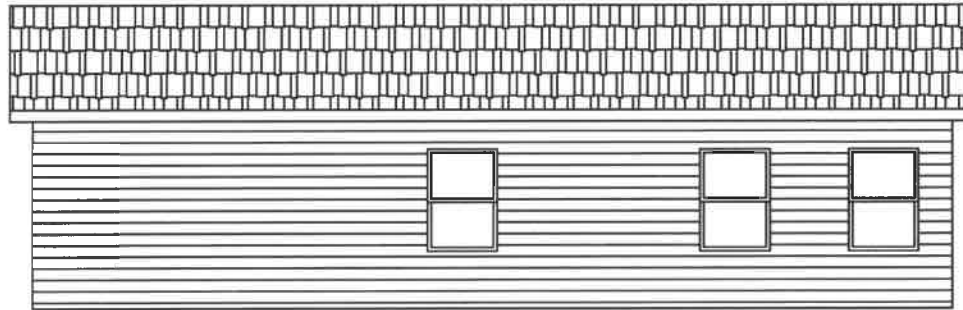
WITH 4' HALF PORCH



LEFT ELEVATION



RIGHT ELEVATION W/ 4' PORCH



REAR ELEVATION

EAGLE RIVER HOMES

	Revisions	Rev. Date:	Rev. By:
A	.	.	.
B	.	.	.
C	.	.	.
D	.	.	.

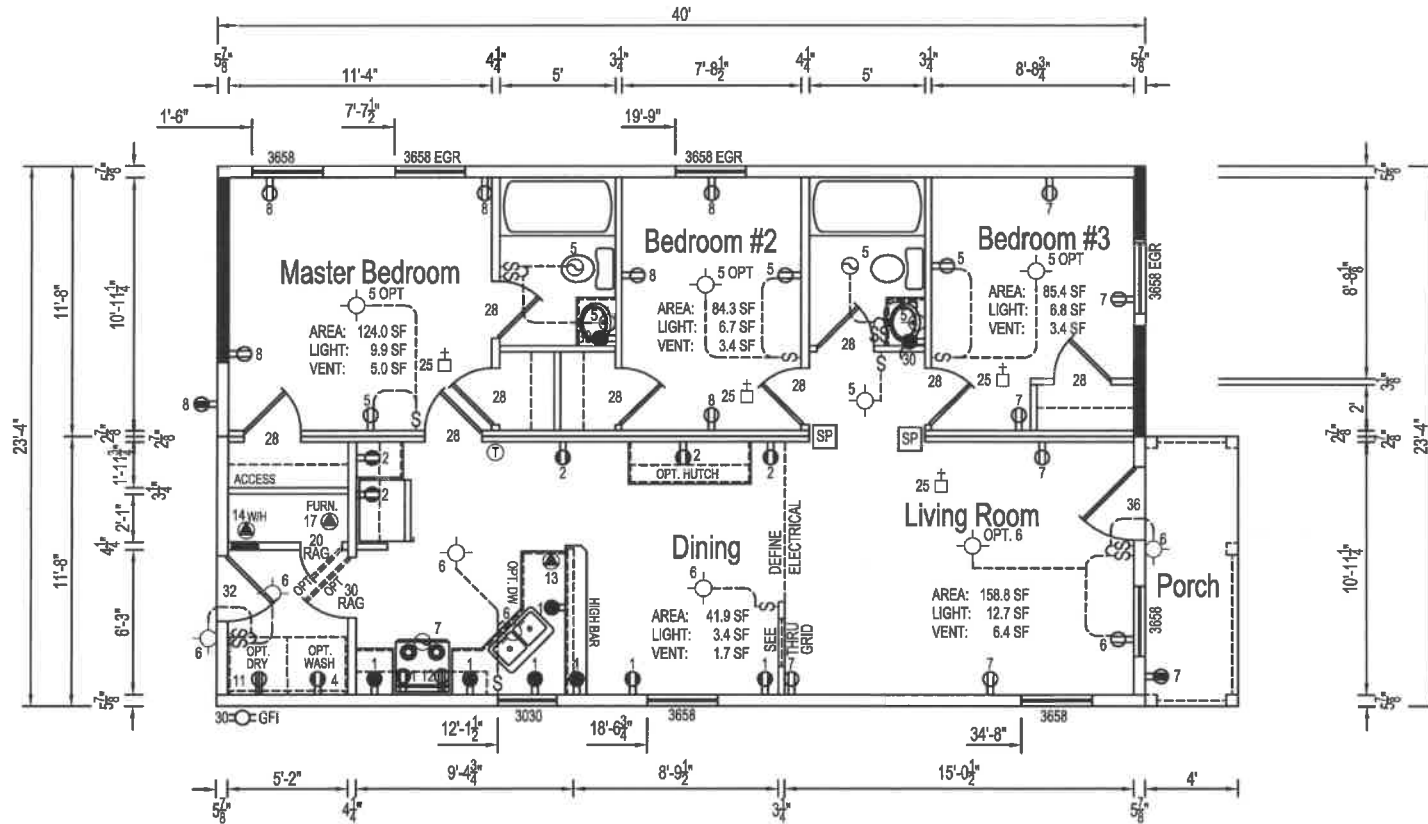
Drawn By:
JY
Date Drawn:
9-14-09

Title:
SIDES AND REAR ELEVATIONS
Model:
ERH-44G1001

Sheet:
EL2

WITH 4' HALF PORCH

MAXIMUM SIDEWALL HEIGHT: 96"
TOTAL WINDOW AREA: 110.06 SQ. FT.



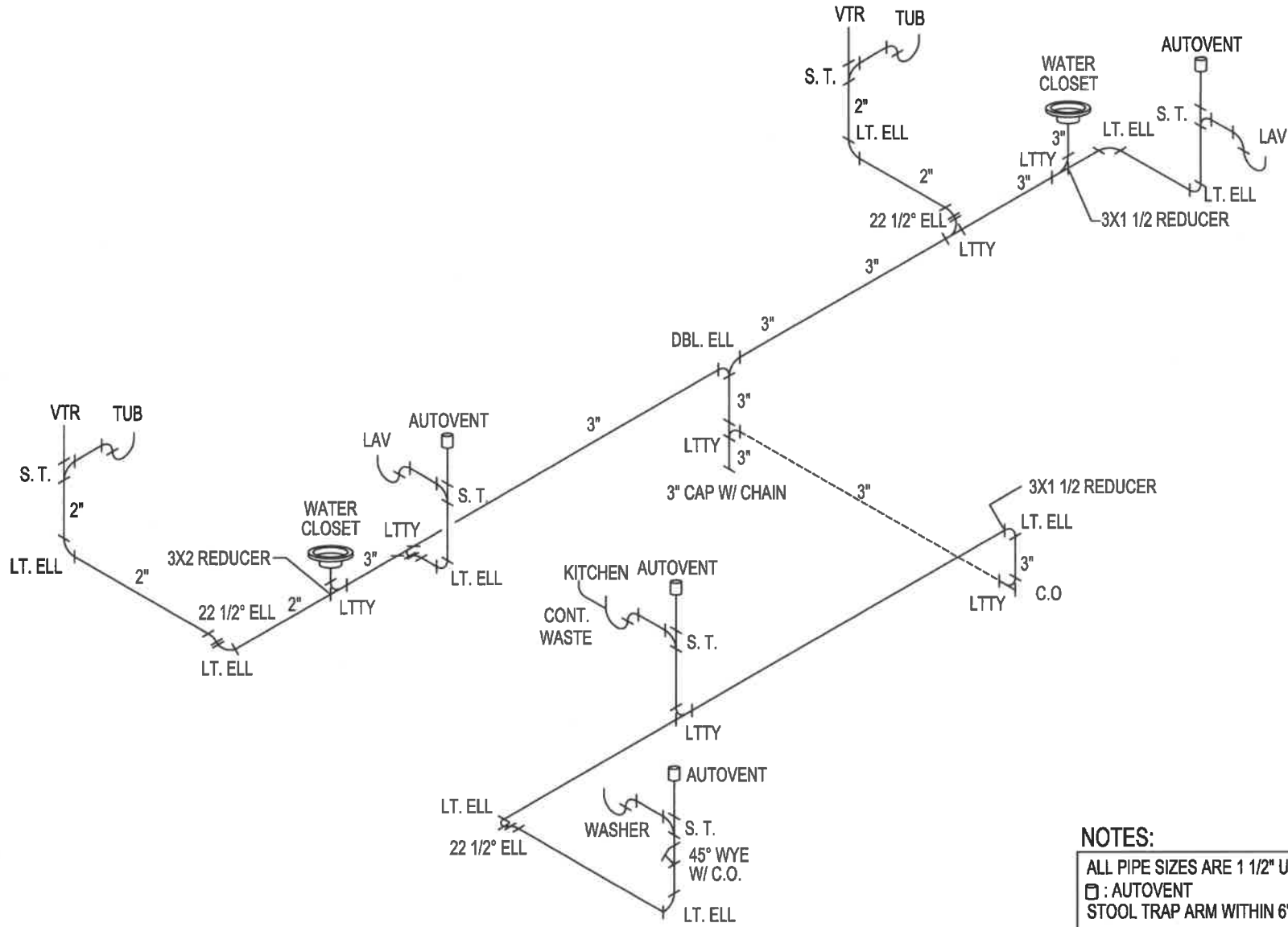
7' S.W.	
ZONE	1
DIS.	40'
LNG	84'
PLF	150
8' S.W.	
ZONE	1
DIS.	40'
LNG	96'
PLF	150

7' S.W.	
ZONE	1
DIS.	40'
LNG	84'
PLF	150
8' S.W.	
ZONE	1
DIS.	40'
LNG	96'
PLF	150

EAGLE RIVER HOMES

Revisions		Rev. Date:	Rev. By:	Drawn By:	Title:
A	REVISED FLOOR PLAN	4-7-10	STAFF	JY	FLOOR PLAN
B	REVD ELECTRICAL LAYOUT	4-7-10	JY		
C					
THE INFORMATION ON THIS PAGE IS PROPRIETARY AND CONFIDENTIAL				Date Drawn:	Model:
				9-14-09	ERH-44G1001-C
					Sheet: FP

WITH 4' HALF PORCH



NOTES:
 ALL PIPE SIZES ARE 1 1/2" UNLESS NOTED
 □ : AUTOVENT
 STOOL TRAP ARM WITHIN 6'
 ----- SHIP LOOSE PARTS

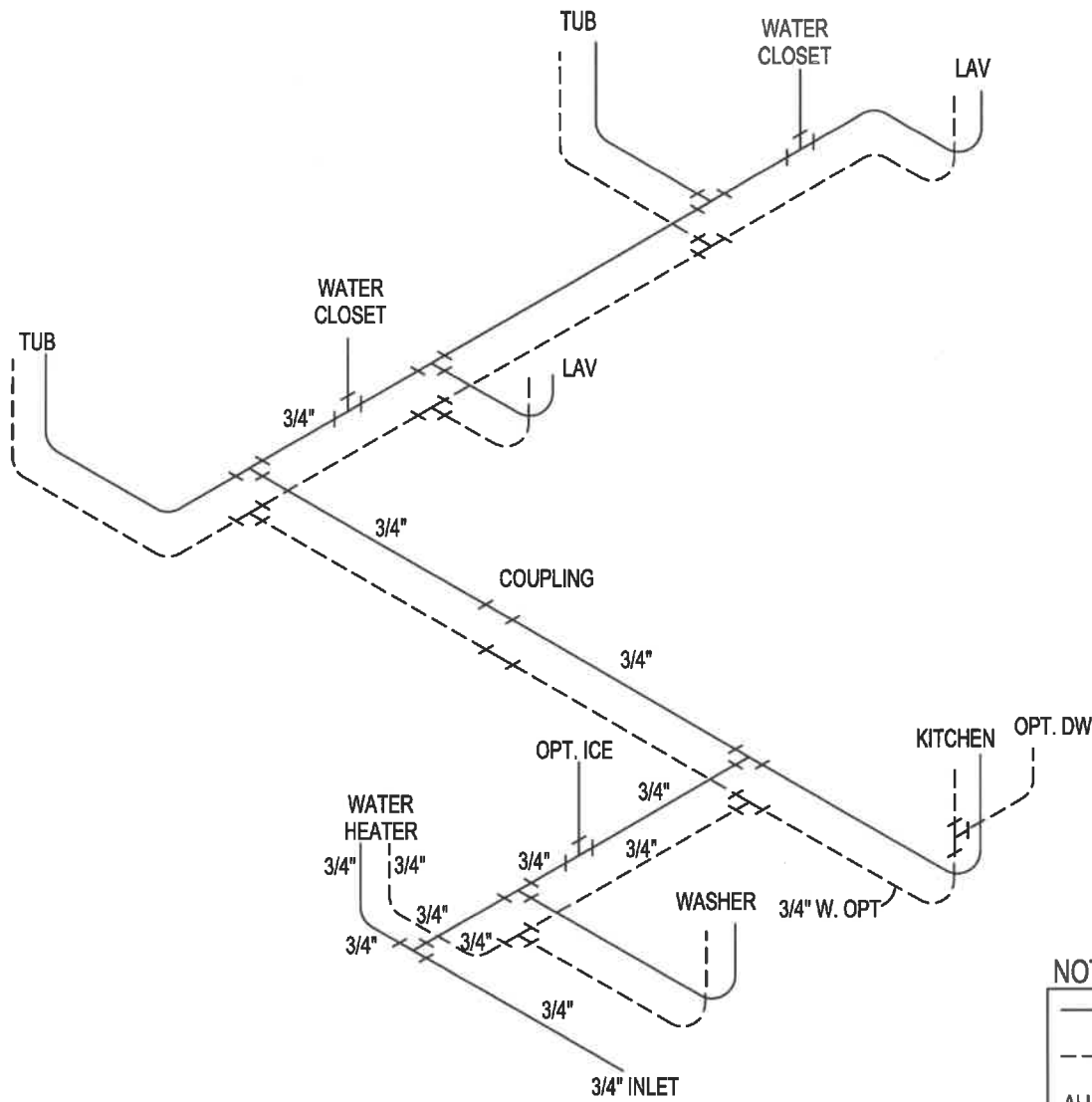


Revisions	Rev. Date:	Rev. By:
A .	.	.
B .	.	.
C .	.	.



Drawn By:	JY	Title:	DWV LAYOUT
Date Drawn:	9-14-09	Model:	ERH-44G1001-C
			Sheet:
			DWV

THE INFORMATION ON THIS PAGE IS PROPRIETARY AND CONFIDENTIAL

WITH 4' HALF PORCH



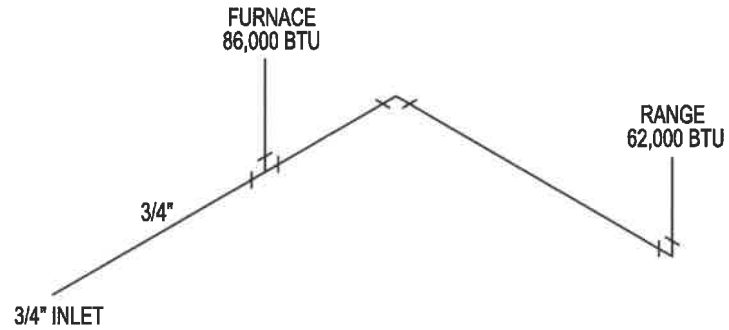
NOTES:

	COLD WATER
	HOT WATER
ALL PIPE SIZES ARE 1/2" UNLESS OTHERWISE NOTED.	



Revisions		Rev. Date:	Rev. By:	Drawn By:	Title:
A	.	.	.	JY	HOT AND COLD SUPPLY LAYOUT
B	.	.	.		
C	.	.	.		
THE INFORMATION ON THIS PAGE IS PROPRIETARY AND CONFIDENTIAL				Date Drawn:	Model:
				9-14-09	ERH-44G1001-C
					Sheet:
					WAT

WITH 4' HALF PORCH



NOTES:

ALL PIPES SIZES ARE 1/2" UNLESS OTHERWISE NOTED.
 MAXIMUM DISTANCE TO MOST REMOTE APPLIANCE: 20'
 MAXIMUM BTU: 148,000



Revisions		Rev. Date:	Rev. By:	Drawn By:	Title:
A	.	.	.	JY	GAS LAYOUT
B	.	.	.		
C	.	.	.		
THE INFORMATION ON THIS PAGE IS PROPRIETARY AND CONFIDENTIAL				Date Drawn: 9-14-09	Model: ERH-44G1001-C
					Sheet: GAS

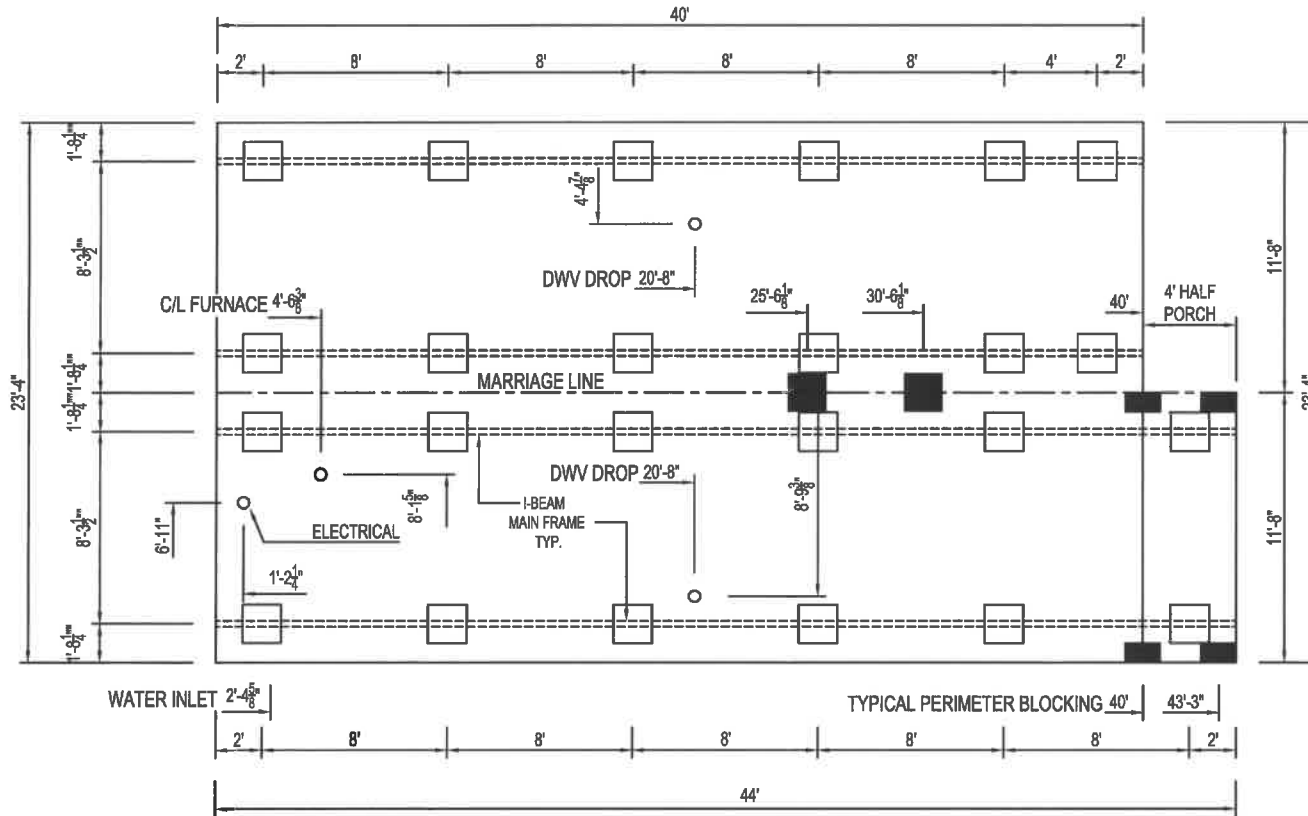
WITH 4' HALF PORCH

NOTES:

A. PRINTS ARE FOR SETUP ONLY AND ARE SUBJECT TO CHANGE WITHOUT NOTICE OR OBLIGATION. FOR PROPER SETUP, SITE PREPARATION AND SITE INSTALLATION, SEE THE EAGLE RIVER HOMES, LLC. INSTALLATION MANUAL.

B. ALL ASPECTS OF THE FOUNDATION CONSTRUCTION ARE TO BE PERFORMED ON SITE BY TRAINED INSTALLERS, AND SUBJECT TO LOCAL CODES AND REQUIREMENTS.

C. BLOCK BOTH SIDES OF ALL EXTERIOR DOORS. ALSO, MARRIAGE WALL OPENINGS AND SIDEWALL OPENINGS OVER 48".



- TYPICAL I-BEAM PIER BLOCKING
- TYPICAL MARRIAGE WALL BLOCKING
- TYPICAL PERIMETER BLOCKING

**BLOCK BOTH SIDES OF ALL EXTERIOR DOORS.
ALSO, MARRIAGE WALL OPENINGS
AND SIDEWALL OPENINGS OVER 48".**

**REFER TO THE ERH, LLC.
INSTALLATION MANUAL
FOR PROPER SETUP**



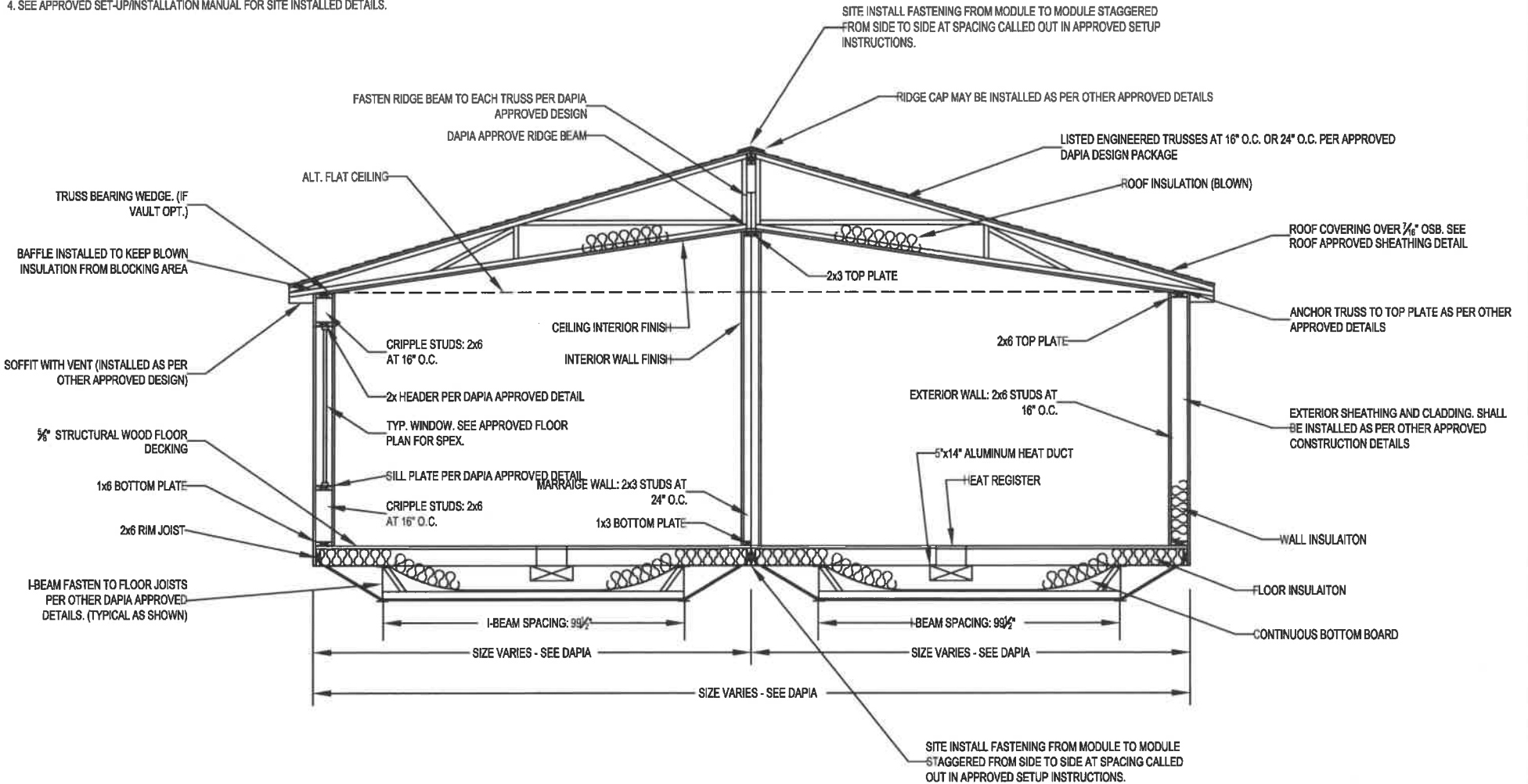
Revisions	Rev. Date:	Rev. By:	Drawn By:	Title:
A .	.	.	JY	PIER PLAN
B .	.	.		
C .	.	.		
THE INFORMATION ON THIS PAGE IS PROPRIETARY AND CONFIDENTIAL			Date Drawn: 9-14-09	Model: ERH-44G1001-C
				Sheet: PIER

GENERAL CROSS SECTION NOTES

1. SEE OTHER APPROVED DESIGN FOR BASEMENT FRAME CONSTRUCTION.
2. THIS TYPICAL CROSS SECTION IS PROVIDED AS A DIAGRAM. (REFER TO OTHER DAPIA APPROVED DESIGNS FOR CONSTRUCTION DETAILS.)
3. SEE APPROVED FOUNDATION PLAN FOR PIER, FOUNDATION WALL AND TIE DOWN ANCHORAGE LOCATIONS, ORIENTATIONS AND SPEX.
4. SEE APPROVED SET-UP/INSTALLATION MANUAL FOR SITE INSTALLED DETAILS.

NOTE:
SEE ALT . APPROVED DESIGNS FOR ROOF PITCH 20 DEGREES.

ATTIC VENTILATION TO BE PROVIDED BY SOFFIT AND RIDGE VENTS. ROOF VENTS.



EXTERIOR FINISH MATERIAL

ROOF: SEE APPROVED PRODUCT DATA FOR SPEX AND INSTALLATION INSTRUCTIONS.

WALL: SEE APPROVED PRODUCT DATA FOR SPEX AND INSTALLATION INSTRUCTIONS.

INTERIOR FINISH MATERIAL

CEILING: GYPSUM BOARD

WALL: GYPSUM BOARD

FLOOR: VINYL OR CARPET MAY BE FIELD INSTALLED. INSTALLED/FINISHED BY OTHER APPROVED



	Revisions	Rev. Date:	Rev. By:
A	.	.	.
B	.	.	.
C	.	.	.

THE INFORMATION ON THIS PAGE IS PROPRIETARY AND CONFIDENTIAL

Drawn By:

Title:

CROSS SECTION DETAIL

Date Drawn:

Model:

9-14-09

ERH-44G1001-C

Sheet:

SECTION